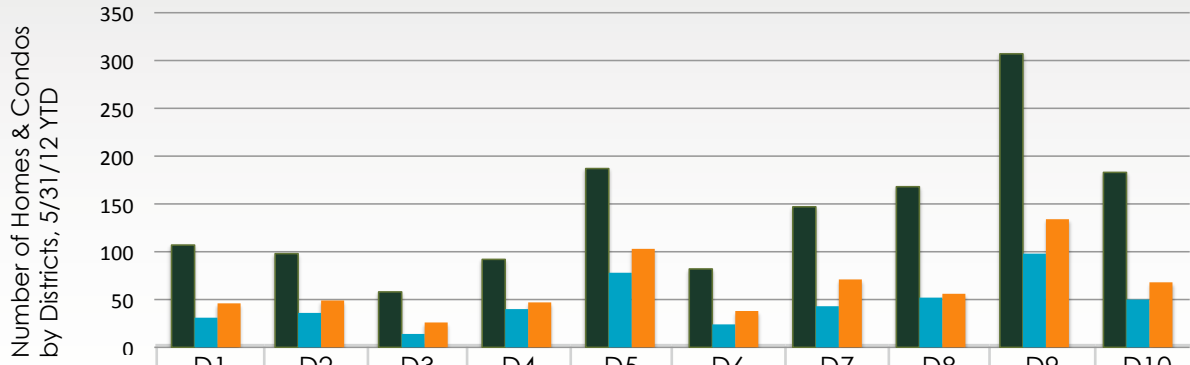


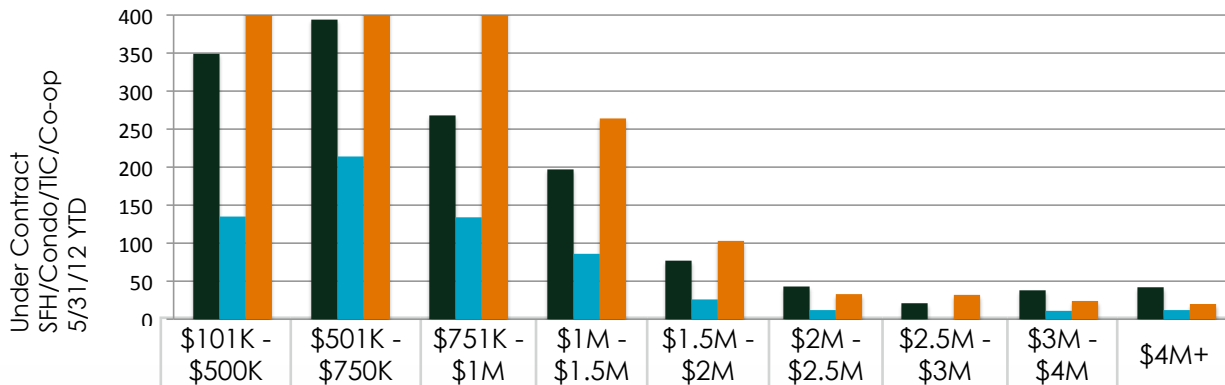
San Francisco MONTHLY MARKET UPDATE

May 1-31, 2012

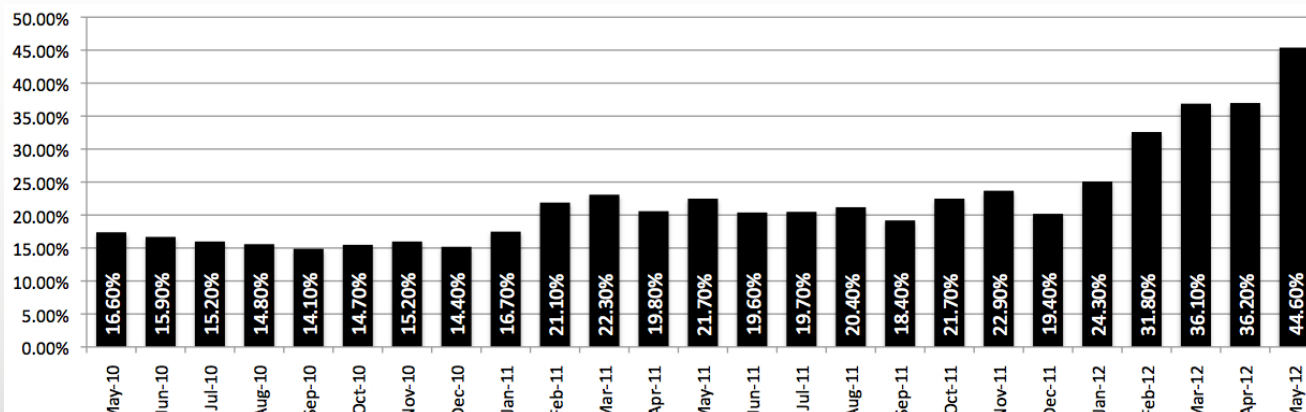


For Sale	107	98	58	92	187	82	147	168	307	183
Sold	31	36	14	40	78	24	43	52	98	50
Under Contract	46	49	26	47	103	38	71	56	134	68
SFH For Sale	55	75	51	80	83	14	54	16	44	145
Condo For Sale	39	21	7	11	70	54	80	135	244	38
TIC For Sale	13	2		1	34	14	13	17	19	

District 1: Jordan Park, Laurel Heights, Lake Street, Lone Mountain. **District 2:** Golden Gate Heights, Sunset, Parkside. **District 3:** Lakeshore, Lakeside, Oceanview. **District 4:** Forest Hill, St. Francis Wood, Twin Peaks, West Portal. **District 5:** Castro, Cole Valley, Dolores Park, Noe Valley. **District 6:** Alamo Square, Hayes Valley, Lower Pacific Heights. **District 7:** Cow Hollow, Marina, Pacific Heights, Presidio Heights. **District 8:** Civic Center, Nob Hill, North Beach, Russian Hill, Telegraph Hill. **District 9:** Bernal Heights, Inner Mission, Mission Bay, Potrero Hill, South Beach, SoMa. **District 10:** Bay View, Excelsior, Hunter's Point, Visitacion Valley.



On Market	349	394	268	197	77	43	21	38	42
In Contract	135	214	134	86	26	12	0	11	12
SOLD YTD	523	682	419	264	103	33	32	24	20



Over 35% in contract usually indicates a sellers' market. Under 25% in contract usually indicates a buyer's market. 25%-35% in contract usually indicates balanced market. Charts represent information gathered from MLS statistics at a specific point in time.