



A Member Of Real Living

East Bay MONTHLY MARKET UPDATE

as of January 31, 2013

EAST BAY AREAS

Single Family Homes (not including condos)

City	Total Active	Number In Contract	Percent In Contract*
Oakland 94602	32	15	47%
Oakland 94609	8	4	50%
Oakland 94610	10	2	20%
Oakland 94611	50	23	46%
Oakland 94618	15	8	53%
Oakland 94619	43	27	63%
Oakland 94705	4	1	25%
Piedmont	8	1	12%
Berkeley	42	20	49%
Albany	8	4	50%
Kensington	2	1	50%
El Cerrito	19	10	53%
Total	241	116	48%

SELECT CITIES WITH HOMES PRICED OVER \$1,000,000

Single Family Homes (not including condos)

City	Total Active	Number In Contract	Percent In Contract*
Oakland 94602	1	0	0%
Oakland 94609	0	0	0%
Oakland 94610	0	0	0%
Oakland 94611	10	3	30%
Oakland 94618	7	2	29%
Oakland 94619	2	1	50%
Oakland 94705	1	0	0%
Piedmont	5	0	0%
Berkeley	8	1	13%
Albany	0	0	0%
Kensington	2	1	50%
El Cerrito	0	0	0%
Total	36	8	22%

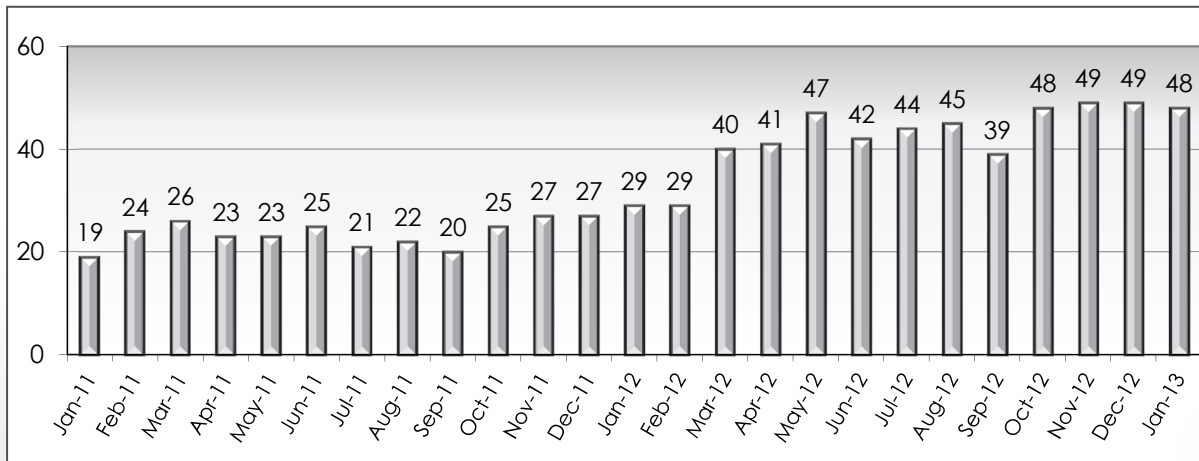
SELECT CITIES WITH HOMES PRICED \$500,000- \$1,000,000

Single Family Homes (not including condos)

City	Total	Number In Contract	Percent In Contract*
Oakland 94602	13	5	39%
Oakland 94609	3	1	33%
Oakland 94610	7	2	29%
Oakland 94611	35	17	49%
Oakland 94618	8	6	75%
Oakland 94619	12	5	42%
Oakland 94705	3	1	33%
Piedmont	3	1	33%
Berkeley	25	13	52%
Albany	6	3	50%
Kensington	0	0	0%
El Cerrito	8	4	50%
Total	123	58	47%

HISTORICAL PERCENT OF HOMES IN CONTRACT

Single Family Homes (not including condos)



MARKET UPDATE BY PRICE

Single Family Homes (not including condos)

Price	Total Active	Number In Contract	Percent In Contract*
\$100,001-\$500,000	82	50	61%
\$500,001-\$750,000	85	43	52%
\$750,001-\$1,000,000	38	15	40%
\$1,000,001-\$1,250,000	12	5	42%
\$1,250,001-\$1,500,000	10	2	20%
\$1,500,001-\$1,750,000	4	1	25%
\$1,750,001-\$2,000,000	2	0	0%
\$2,000,001-\$3,000,000	6	0	0%
\$3,000,001 and up	2	0	0%
Total	241	116	48%

*Over 35% in contract is usually indicative of a sellers' market. Under 25% in contract is usually indicative of a buyer's market. 25%-35% in contract indicates a balanced market.

Charts represent information gathered from MLS statistics at a specific point in time.