

EAST BAY MONTHLY MARKET UPDATE

East Bay Areas

Single Family Homes (not including condos)
January 31, 2012

City	Total	Number In Contract	Percent in Contract*
Oakland 94602	67	16	24%
Oakland 94609	37	11	30%
Oakland 94610	24	6	25%
Oakland 94611	57	10	18%
Oakland 94618	16	5	31%
Oakland 94619	114	29	25%
Oakland 94705	8	2	25%
Piedmont	10	5	50%
Berkeley	100	34	34%
Albany	20	6	30%
Kensington	11	4	36%
El Cerrito	37	15	41%
Total	501	143	29%

East Bay Market Update by Price

Single Family Homes (not including condos)
January 31, 2012

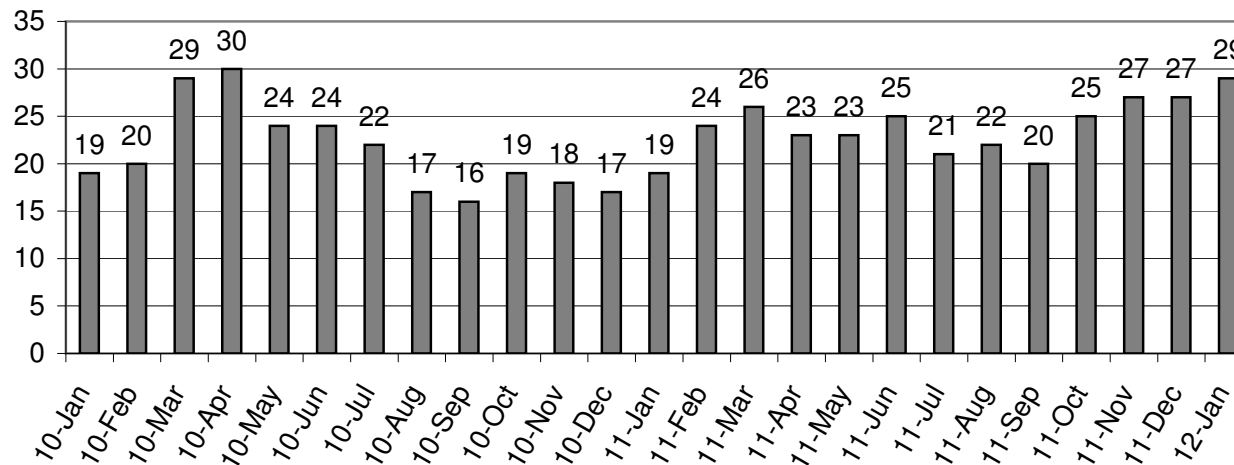
Price	Total	Number In Contract	Percent in Contract*
\$100,001-\$500,000	285	85	30%
\$500,001-\$750,000	122	34	28%
\$750,001-\$1,000,000	57	17	30%
\$1,000,001-\$1,250,000	12	0	0%
\$1,250,001-\$1,500,000	11	2	18%
\$1,500,001-\$1,750,000	3	2	67%
\$1,750,001-\$2,000,000	3	1	33%
\$2,000,001-\$3,000,000	1	0	0%
\$3,000,001 and up	4	1	25%
Total	498	142	29%

Select Cities with Homes Priced over \$1,000,000

Single Family Homes (not including condos)
January 31, 2012

City	Total	Number In Contract	Percent in Contract*
Oakland 94602	0	0	0%
Oakland 94609	0	0	0%
Oakland 94610	1	0	0%
Oakland 94611	8	0	0%
Oakland 94618	4	1	25%
Oakland 94619	5	0	0%
Oakland 94705	1	0	0%
Piedmont	5	3	60%
Berkeley	7	1	14%
Albany	2	1	50%
Kensington	1	0	0%
El Cerrito	0	0	0%
Total	34	6	18%

Percent of Homes in Contract Single Family Homes (not including condos) January 31, 2012



Select Cities with Homes Priced \$500,000- \$1,000,000

Single Family Homes (not including condos)
January 31, 2012

City	Total	Number In Contract	Percent in Contract*
Oakland 94602	16	4	25%
Oakland 94609	9	3	33%
Oakland 94610	18	3	17%
Oakland 94611	34	8	24%
Oakland 94618	12	4	33%
Oakland 94619	10	2	20%
Oakland 94705	7	3	43%
Piedmont	5	2	40%
Berkeley	40	15	38%
Albany	10	2	20%
Kensington	8	3	38%
El Cerrito	13	3	23%
Total	182	52	29%

*Over 35% in contract is usually indicative of a sellers' market. Under 25% in contract is usually indicative of a buyers' market. 25%-35% in contract indicates a balanced market.

Charts represent information gathered from MLS statistics at a specific point in time.

